

FABER

Vitro Ceramic Hob(Hotplate)

Model No FCC XERA MF30

Operator's Instruction Manual for Vitro Ceramic Hob(Hotplate)

Dear Customers:

The cooktop is exceptionally easy to use and extremely efficient. Please carefully read this manual prior to installation and operation and keep it safe for future reference.

Firstly:

Examine the electric cooktop after unpacking. Should any damage be found to have occurred during transportation, do not connect it to the power supply. Immediately contact the Service Agent.

Introduction of Product

The cooktop is suitable for a variety of cookware. It is controlled by a micro computer with multiple functions, without magnetic radiation when operating and will not disturb other electrical apparatuses.

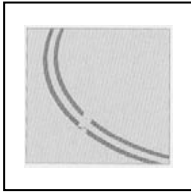
The cooktop is made from quality materials with state-of-the-art technology ensuring it is safe and reliable. (Keep the below marking label when use the product)

Model: FCC XERA MF30

Rated voltage: 220-240V~ 50/60Hz

Power: 2000W

The user must remember that the earth wire should be longer than the other wires when connecting with power supply and it must be firstly connected and finally disconnected.



Discoloring of ornamental color

It is caused by the use of improper cleaning product which wears ornament.

The above-mentioned different types of damage are caused by improper operation of the product. They are not technical problems.

TROUBLESHOOTING

1, Overheating protection of cooking panel

When temperature of cooking panle reaches 600°C, the cooker will automatically cool down.

2, High temperature protection inside cooker

When the temperature inside the cooker circuitry reaches 100°C, it will stop heating.

Error Message	Cause	Solution
E1	Damage of temperature sensor or super high temperature protection in cooker.	Check if the fan in air intake is workable or not, the temperature sensor is damaged or mainboard is damaged.
E2	The cooker has become too hot.	Let cooker cool down before restarting, and if sensor is damaged.

Imported & Distributed by:



FIMACO SDN BHD

(110749-V)

Website:

www.faberappliances.com.my

8-2 WISMA FIAMMA

No. 20, Jalan 7A/62A

Bandar Manjalara

52200 Kuala Lumpur

Malaysia.

Tel : +603-6279 8888(General Line)

Fax: +603-6279 8665(Marketing Dept)

Email: info@fimaco.com.my



TOLL-FREE Customer Service Centre

1800-28-2093

Operation Hour: From Monday To Friday,

8.30am to 6.00pm

Connection of Power Supply

Means for all poles disconnection must be incorporated in the fixed wiring in accordance with the wiring rule, and the distance between poles shall be more than 3 mm.

Caution:

Keep a distance of the surface of the cooktop from an overhead cabinet by 760mm or more.

Warning:

The cooktop must be installed by a suitably qualified authorized electrician. Do not attempt to install the cooktop yourself.

The cooktop should be correctly installed to avoid thermal radiation and enhance its reliability.

The sandwich layer and bonding must be heat resistant to avoid damage.

Instruction of Safety



Use specific air break switch for protection of power supply.



The cooktop is intended for home cooking.



Don't heat sealed food such as cans and tins to avoid the possibility of explosion.



The appliance is not intended for use by persons (including children) with reduced physical,

sensory or mental capabilities or lack of experience and knowledge, unless they have been given supervision or instruction concerning the use of the appliance by a person responsible for their safety.

Children should be supervised to ensure they do not play with the appliance.

Children less than 8 years of age shall be kept away unless continuously supervised

The appliance and its accessible parts become hot during use, Care should be taken to avoid touching heating elements.

Cleaning and user maintenance shall not be made by children without supervision.

WARNING: Unattended cooking on a hob with fat or oil can be dangerous and may result in fire.

NEVER try to extinguish a fire with water, but switch off the appliance and then cover flame with a lid or a damp cloth.

WARNING: Danger of fire: do not store items on the cooking surfaces.



Don't operate the electric range under high ambient temperature such as close to a gas stove.



Don't put any detergent or flammable material on the electric range.



If the appliance becomes broken, cracked or damaged, please immediately switch off the main unit and contact the Service Agent.



If the supply cord is damaged, it must be replaced by the manufacturer or its service agent or a similarly qualified person in order to avoid a hazard.

Protect ceramic surface: Do not use pots or pans with course bottoms or grit on the bottom surface. The ceramic surface can become scratched. Inspect surface of ceramic and base of saucepans before each use.

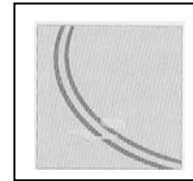
Hot cookware: Never put a hot saucepans or frying pans on to the ceramic surface while it is cold.

Salt, sugar and sand: Ensure salt, sugar and sand so not accidentally spread onto ceramic whilst preparing vegetables and other foods.

Hard or sharp object: If a hard or sharp object drops on the ceramic top, the surface may be damaged.

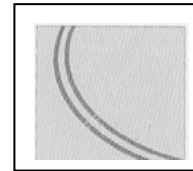
Unsuitable cleaning products: Do not use metal wire mesh or brush or spray of de-rusting detergent for cleaning the electric range.

Examples of potential damage: The following damage does not affect the working and strength of the ceramic surface.



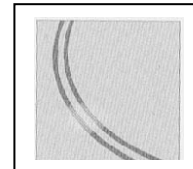
Rusting

It is caused by leakage or dissolving of sugar of high-sugar food.



Scratching Marking

It is caused by sugar, salt and sand or irregular bottom of flat-bottom cooker.



Discoloring

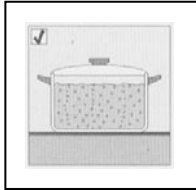
It is caused by wear of the metallic edge of the electric range or utilization of improper cleaning product such as detergent etc.

Caution:

Please disconnect from power mains before cleaning.

Figure (6) shows the maximum power of each cooking zone.

Appropriate cookware: Choose saucepans and frying pans with suitable capacity for the food to be prepared.

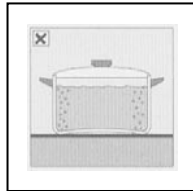
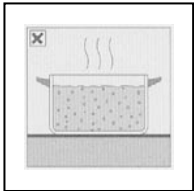


It is advisable to use a lid whenever practical to conserve energy.

The base size of the pot should be at least the size of the cooking zone. The diameter of different cooking zones is 18cm, 14cm and 18cm, 14cm. If the size of the bottom of pot is same as that of the cooking zone, it ensures best heat transfer. When purchasing cookware, please remember that the opening diameter marked by the manufacture is larger than the size of the bottom.

Avoid heating empty enamel cookware.

Please read the instruction manual provided by the cookware manufacturer.



Cleaning: Never use high-pressure cleaners or steam cleaners to clean the electric range. Clean the surface of range area with a piece of wet cloth after using, and then, keep the surface of range bright and clean with a protective product designed for ceramics tops.



Generation of heat will be made on the surface of range area and cookware when the electric range is working. Do not touch the surface of range to avoid of hazard of burning. Keep the children away from the appliance.

Ensure that electrical cables do not come in contact with the cooktop surface.



Don't directly flush the electric range with water to avoid hazard.



Do not leave food packed with silver foil, tableware, covers or metallic articles on the electric range. If the cooktop is turned on by mistake, these items may rapidly be heated, which may result in burning.



The surface of the appliance becomes hot when operating.



Don't touch the surface after removing the cookware from the cooktop because the surface will still be very hot.

Appliance is not intended to be operated by means of an external timer or separate remote-control system.

Overheated oil: Do not place fatty or oily food on the electric range. Oil may easily be overheated to result in fire hazard. If the fire hazard is caused by oil, don't extinguish it with water. Immediately apply a cover on the fire to isolate the cooktop area.

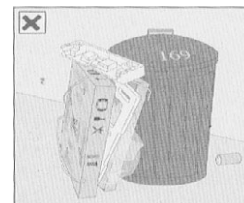
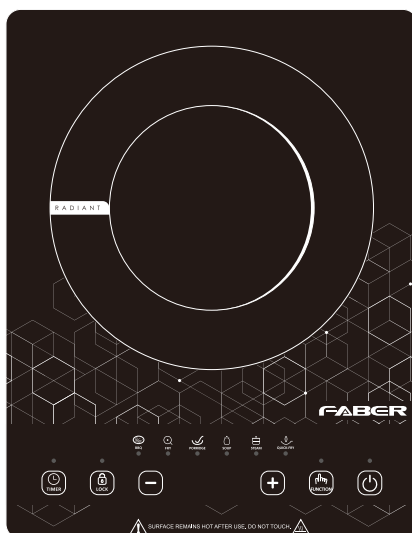
Heating food inside the cookware: Put the food into the saucepan or frying pan to heat. Don't directly put food on the surface of range.

Removal of electric range from a kitchen: Confirmation of disconnection of the power supply from main body of kitchen must be made prior to removal.

Environmental protection





The product with protective package: The electric range is specially packed to protect during transportation. All packages are environmentally friendly and may be recycled. An environment friendly method should be adopted for treatment of these materials to actively contribute the environmental protection.

Outside View of Cooktop: FCC XERA MF30



Disable a used electrical range: The user should disable the electric range or apply a label to show that the appliance does not work prior to disposal. The local government or council can provide some information to instruct the users for most effective treatment of these materials. Do not place in household garbage bin.

How to Use

- . Pressing  button, the indicator light is shining.
- . Pressing  button to select the function you need: BBQ/FRY/PORRIDGE/SOUP/STEAM/QUICK-FRY.
- . Show the "H" that mean high temperature.
- .  and  is decrease and increase the power.
- . When you choose BBQ function, the light is shining, display will shows:300.Means default power is 300°C (temperature range:100°C,200°C,300°C,400°C,450°C,500°C,550°C).
- . When you choose FRY function, the light is shining, display will shows:1200W. Means default power is 1200W(temperature range:200W,400W,600W,800W,1000W,1200W,1400W,1600W,1800W,2000W).
- . When you choose PORRIDGE function, the light is shining, display will shows:1000. Means default power is 1000W.
- . When you choose SOUP function, the light is shining, display will shows:1400. Means default power is 1400W.
- . When you choose STEAM function, the light is shining, display will shows:1600. Means default power is 1600W.
- . When you choose QUICK-FRY function, the light is shining, display will shows:2000. Means default power is 2000W. (temperature range:600W,800W,1000W,1200W,1400W,1600W,1800W,2000W).
- . Press timer function to select the timer. Display shows:0; Timer range:0-180 mins. 1 mins/level before 30mins and 5 mins/level after 30mins.
- . Press lock function to lock the function, press 2 mins to lock and press 2 mins to unlock, press lock function to unlock the function. Except ON/OFF.